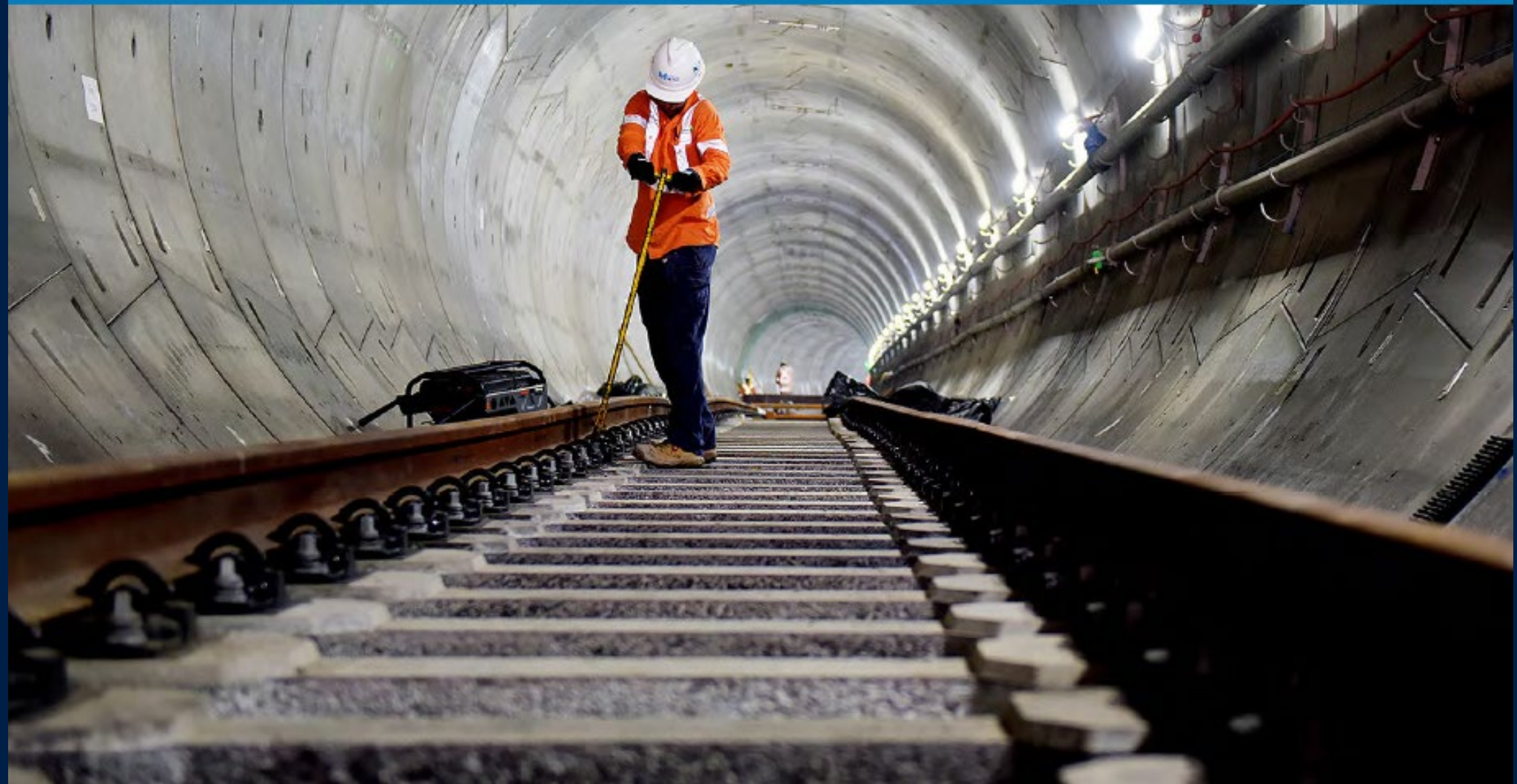
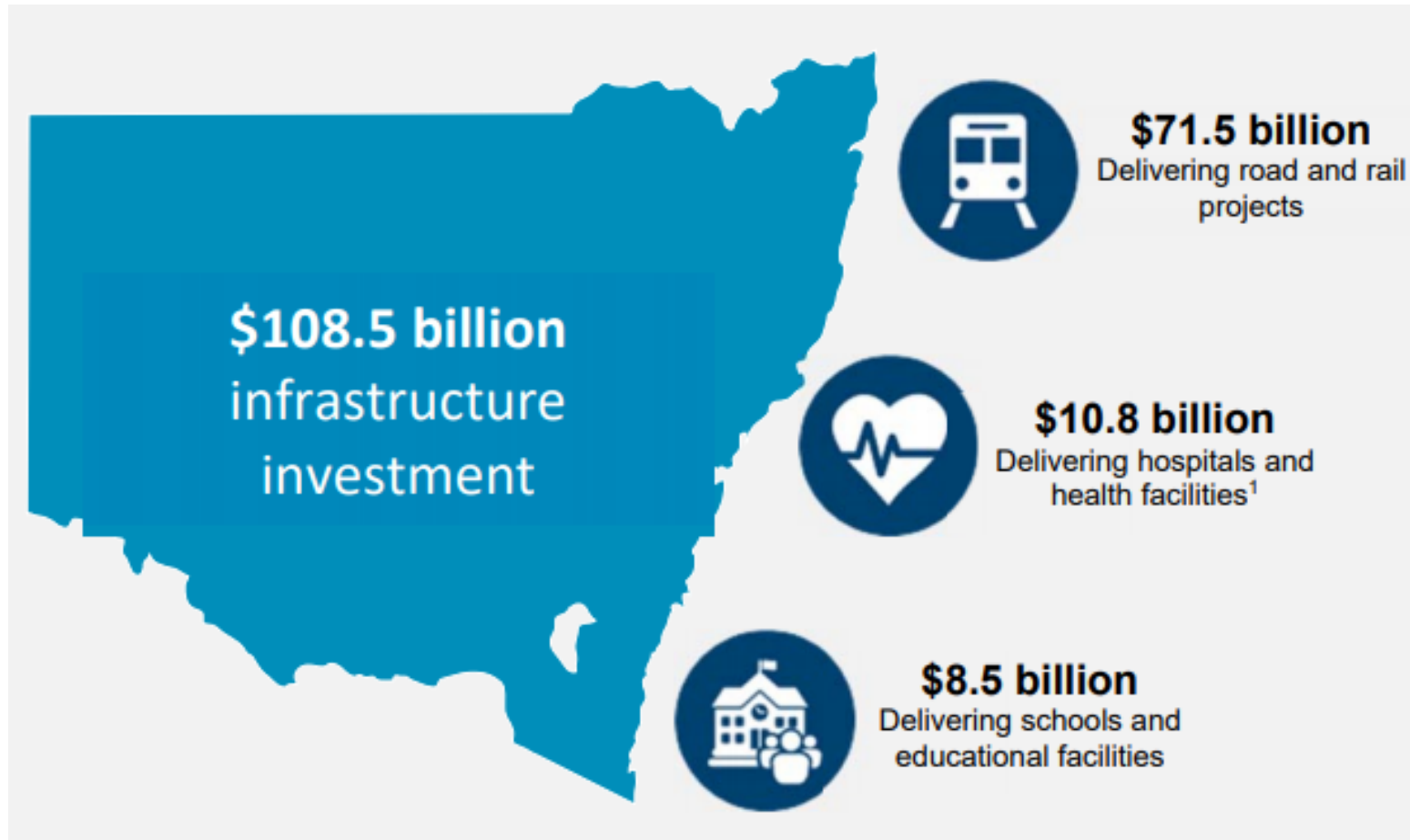




NSW Infrastructure Pipeline



The Government's infrastructure program is driving a better state



Supporting post pandemic economic recovery

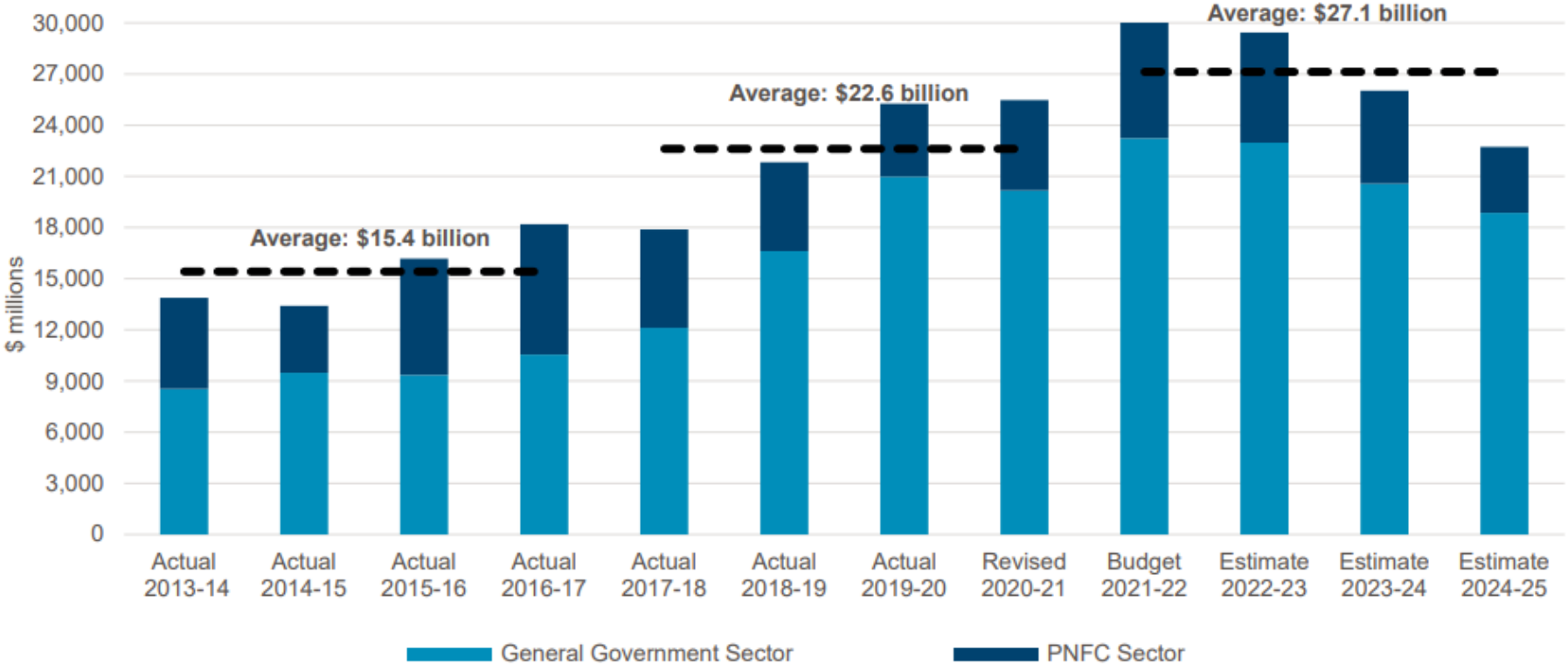
Ensuring continuity for the construction sector

Focused on productivity and resilience

Source: Budget Paper No. 3 Infrastructure Statement – 21-22 Budget

The infrastructure program is bigger than ever

Chart 1.1: Infrastructure program from 2013-14 to 2024-25



Source: Budget Paper No. 3 Infrastructure Statement – 21-22 Budget



The NSW Infrastructure Pipeline – 60 projects over seven sectors

Cluster	Project Name	Estimated Value	Procurement Strategy	Current Phase	Procurement Start Date (est.)	Construction Start Date (est.)
Health	Griffith Hospital Redevelopment	\$100M to \$250M	D&C	Final Business Case	Q4 2021	Q3 2022
Health	The Children's Hospital at Westmead Redevelopment - Stage 2	Over \$500M	TBA	Strategic Planning	Q3 2021	Q2 2022
Education	Murwillumbah Education Campus Project	\$100M to \$250M	VECI, ECI	Design	Q4 2020	Q2 2022
Education	Western Sydney Specialist Advanced Training Centre	\$100M to \$250M	TBA	Strategic Planning	Q1 2022	Q3 2022
Transport for NSW	Appin Road Improvements	\$50M to \$100M	CO	Final Business Case	Q2 2021	Q1 2022
Transport for NSW	Coffs Harbour Bypass (subject to Federal funding)	Over \$500M	TBA	Final Business Case	Q4 2020	Q3 2022
Transport for NSW	Henry Lawson Drive Upgrade - Stage 1	\$50M to \$100M	CO	Strategic Planning	Q2 2023	Q4 2023
Transport for NSW	M12 Motorway (M7 to The Northern Road) - Package 1 - Western Section	\$250M to \$500M	CO	Final Business Case	Q3 2021	Q2 2022
Transport for NSW	M12 Motorway (M7 to The Northern Road) - Package 2 - Central Section	\$250M to \$500M	CO	Final Business Case	Q3 2021	Q2 2022
Transport for NSW	M12 Motorway (M7 to The Northern Road) - Package 3 - Eastern Section	\$100M to \$250M	CO	Final Business Case	Q3 2022	Q1 2023

Cluster	Project Name	Estimated Value	Procurement Strategy	Current Phase	Procurement Start Date (est.)	Construction Start Date (est.)
Transport for NSW	Mulgoa Road, Jeanette Street to Blaikie Road - Stage 1	\$100M to \$250M	CO	Final Business Case	Q2 2021	Q2 2022
Transport for NSW	Spring Farm Parkway - Stage 1	\$100M to \$250M	CO	Final Business Case	Q4 2021	Q3 2022
Transport for NSW	Sydney Metro - West - Eastern Tunnelling	Over \$500M	D&C	Construction Procurement	Q3 2021	Q1 2023
Transport for NSW	Sydney Metro - West - Enabling Works - Brownfield Rail Works	\$250M to \$500M	D&C	Construction Procurement	Q2 2021	Q1 2022
Transport for NSW	Sydney Metro - West - Line Wide Systems	Over \$500M	TBA	Construction Procurement	Q4 2021	Q1 2025
Transport for NSW	Sydney Metro - West - Parramatta Integrated Station	Over \$500M	D&C	Construction Procurement	Q3 2022	Q4 2027
Transport for NSW	Sydney Metro - West - Station Systems	TBA	Various	Construction Procurement	Q2 2021	Q3 2023
Transport for NSW	Sydney Metro - West - Stations Package West	Over \$500M	D&C	Construction Procurement	Q4 2021	Q3 2028
Transport for NSW	Sydney Metro - West - Sydney CBD North Integrated Station	\$250M to \$500M	D&C	Construction Procurement	Q1 2023	Q2 2028
Transport for NSW	Sydney Metro - West - Sydney Olympic Park Station	Over \$500M	D&C	Construction Procurement	Q2 2022	Q4 2027
Transport for NSW	Sydney Metro - West - The Bays Integrated Station & Precinct	Over \$500M	D&C	Construction Procurement	Q4 2022	Q4 2027

NSW Infrastructure Pipeline

Transport projects:

- Sydney Metro West
- Sydney Metro Western Sydney Airport
- Coffs Harbour Bypass
- M1 extension to Raymond Terrace
- Western Harbour Tunnel
- Warringah Freeway Upgrade
- M12 Motorway
- Henry Lawson Drive Upgrade – Stage 1
- Macquarie University Station Bus Interchange and Layover
- Spring Farm Parkway – Stage 1



NSW Infrastructure Pipeline

Health projects:

- Bankstown-Lidcombe Hospital Redevelopment
- Bowral Hospital – Stage 2
- Eurobodalla Hospital Redevelopment
- John Hunter Health and Innovation Precinct
- Manning Base Hospital – Stage 2
- Nepean Hospital Redevelopment – Stage 2
- State-wide Mental Health Infrastructure Program
- Sydney Children’s Hospital at Randwick and Comprehensive Children’s Cancer Centre
- The Children’s Hospital at Westmead Redevelopment – Stage 2



NSW Infrastructure Pipeline

Additional major upcoming projects:

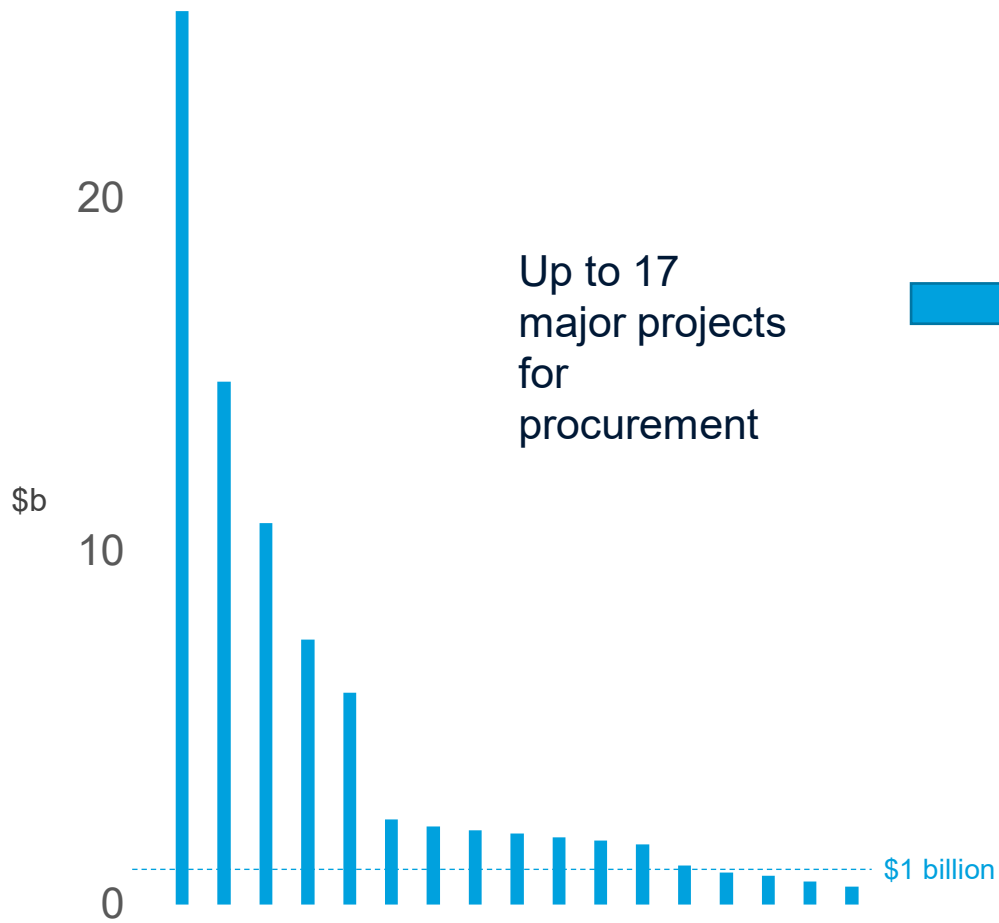
- Powerhouse Ultimo
- Murwillumbah Education Campus Project
- Aboriginal Housing Office – New Supply and Upgrade
- Blackwattle Bay Precinct

Regional Special Activation Precincts:

- Wagga Wagga
- Moree
- Snowy Mountains
- Williamtown
- Parkes



The next two years will require strong engagement between Government and industry



Up to 27 contract packages to be awarded

H1 2021	H2 2021	H1 2022	H2 2022	H1 2023
9	6	7	4	1

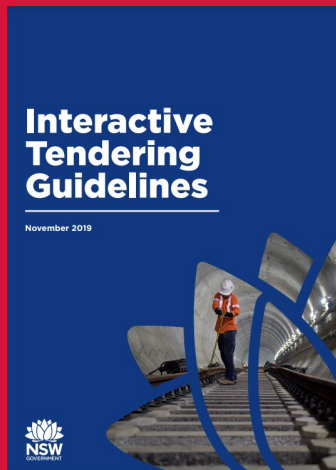
.... each subject to satisfaction of investment decision and tender outcome

Key challenges that industry partnerships will help address:

- Capacity and skill constraints
- Declining productivity
- Cost blowouts on mega projects

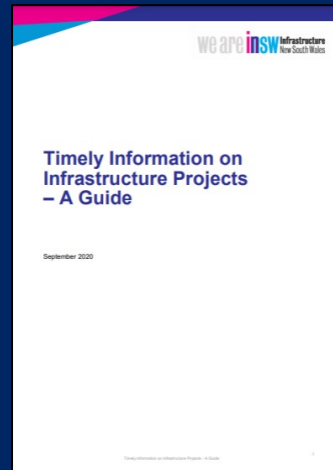
A suite of frameworks and advisories introduced to benefit the sector

Interactive Tendering Guidelines



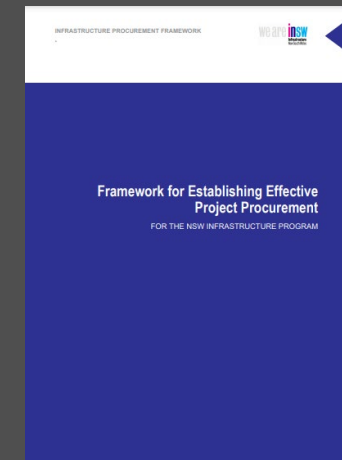
For mega projects

Timely Information on Infrastructure Projects



A Guide

Premier's Memorandum



On Complex Procurement & Implementation Framework

